


CONTINENTAL
GIRBAU®

Do not allow children to operate machine.



DOOR IS EQUIPPED WITH INTERLOCK SAFETY DEVICE

- Never try to open the door if:
 - Cycle has not finished
 - Drain has not completely stopped
 - Water has not been completely drained.

INTELLI CONTROL



The control panel features a digital display showing a cycle time of 12 min. Below the display is a numeric keypad with buttons for 1-9, 0, and C. To the right of the keypad is a red STOP button. The panel is labeled 'INTELLI CONTROL' and 'CONTINENTAL GIRBAU INC'.



eSERIES®

HIGH-PERFORMANCE SOFT-MOUNT
WASHER-EXTRACTORS FOR ON-PREMISE LAUNDRIES
EH030 | EH040 | EH060

E-Series Washers, in 30-, 40- and 60-pound capacities, offer an easy-to-install freestanding design, highly programmable controls and superior energy efficiency. Designed to reach extract speeds up to 400 G-force, E-Series Washers remove more water from every load, cutting dry time and catapulting laundry productivity. Simple to use, E-Series Washers properly clean virtually any fabric type in considerably less time, using less labor. Robustly engineered, E-Series Washers are backed by an industry-leading 5/3-year ContinentalCare Warranty.

ZERO-IMPACT INSTALLATION

The freestanding design of E-Series allows for quick installation and same-day operation. Unlike hard-mount washers, there is no need to bolt E-Series Washers to concrete foundations. The machines are constructed using a Multi-Directional Springs (MDS) system that absorbs 95 percent of all vibrations during the wash process. This allows installation in unconventional locations, including rooms with in-floor heat and second-story laundries—all with little or no floor preparation or cost. Moreover, the freestanding design allows laundries to easily relocate E-Series Washers with zero impact on the facility, resulting in very low residual moisture levels.

PROVEN CONSTRUCTION, DURABILITY & LONGEVITY

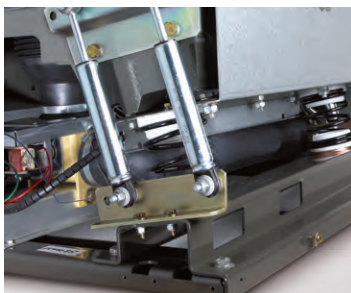
E-Series Washers feature durable AISI-304 stainless steel inner and outer drums designed for constant use. The front, side and top panels are constructed of steel and coated with Continental's unique Titan Steel Finish® for superior appearance and corrosion resistance. Each component is engineered with as few welds as possible for unmatched strength. The oversized door, which allows for easy loading and unloading, is also equipped with a heavy-duty, bolt-style hinge to withstand the rigors of constant use. Rounded cabinet corners, oversized bearings and a quality sealing system ensure years of trouble-free use.

EASE OF MAINTENANCE

We've simplified maintenance requirements on our E-Series line, and simultaneously, ensured accessibility of components. The top panel of the washer is easily removed without interfering with chemical dispensers. The drain is easily accessible via the removal of the front panel. Bearings are lubricated for a lifetime, the poly-v belt needn't be tightened and bearings and seals are easily replaced without removing the washer drum.

SMOOTH TOUCH

This system of deep-punched holes, without sharp edges, ensures that the linen is treated delicately. SmoothTouch aids the evacuation of water during the final spin, resulting in very low residual moisture levels.



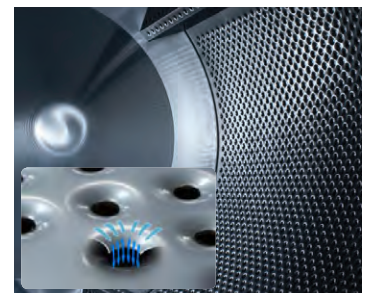
MDS SYSTEM



COMPONENT ACCESSIBILITY



NO WELDS

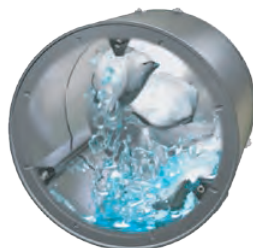


SMOOTH TOUCH STAINLESS STEEL CONSTRUCTION

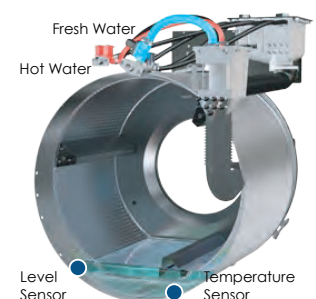
SUPERIOR WASH QUALITY

E-Series technology allows for superior wash quality using considerably less water than many competitive washers. E-Series Washers are designed without a sump – a water containment area at the base of the washer. This saves up to 3 gallons of water with each fill when compared to machines equipped with an outer tub sump. Less water used equates to lower water-heating costs and reduced chemical usage.

Advanced engineering also allows E-Series Washers to conserve even more water via the exclusive AquaFall™ system. With AquaFall, water is released into the load through holes in the drum lifters. As the drum turns, the lifters release water from above for better saturation and rinsing using less water and time. Less water used equates to considerable savings in water usage and water heating costs!



Continental's AquaMixer™ system further improves wash action by mixing hot and cold water to achieve precise bath temperatures—saving energy while minimizing hot water consumption and reducing wash time.

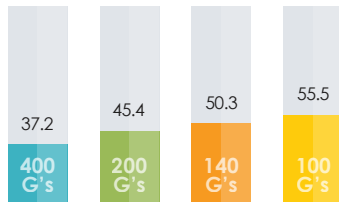


DELIVER MORE USING LESS

Whether your replacing or buying new, highly efficient laundry equipment may seem like a big investment up front, but the monetary investment will pay for itself in no time through utility efficiencies and increased staff productivity.



LESS WATER REMAINING AFTER EXTRACT



Pounds of Water Retained – 60lb Load

The freestanding design of E-Series enables extraction speeds up to 400 G-force. The high-speed extract removes significantly more water from each load—decreasing dry time. With less moisture in the linen upon completion of the wash cycle, the time and utilities required to dry a load are significantly reduced and sometimes eliminated. Linen can then be directly transferred from the washer to a flatwork ironer.

Assumptions: 100% load saturation; moisture retention: 62% – 400Gs, 76% – 200Gs, 84% – 140Gs, 92% – 100Gs.



LESS DRY TIME



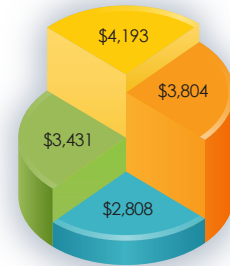
Minutes of Dry Time – 75lb Dryer

Because less water is retained in linen, dry time is reduced and linen is exposed to less mechanical action and heat—reducing linen wear. Dryer operating time is also reduced—extending equipment life and slashing gas consumption.

Assumptions: Water removal rate of 1.2 lbs/minute.



LESS DRYER GAS USAGE



Annual Gas Costs – 75lb Dryer

Reducing dry time can cut the gas consumed to dry a load by more than 33 percent! In turn, on-premise laundries will significantly decrease associated gas costs.

Assumptions: 11 loads/day, 2103 BTUs evaporates 1lb of water, \$0.895/therm (U.S. Feb 2016 National Average)

THE BOTTOM LINE? BOOSTED PRODUCTIVITY!

How can E-Series Washers produce more laundry per hour when compared to lower-performance machines? The answer lies in wash and dry throughput. E-Series Washers reach much higher extraction speeds—resulting in greater moisture removal, shortened dry time and boosted productivity. This boosts productivity, reduces labor costs and extends linen life by minimizing exposure to dryer heat and tumbling.

Reduced Cost per Pound

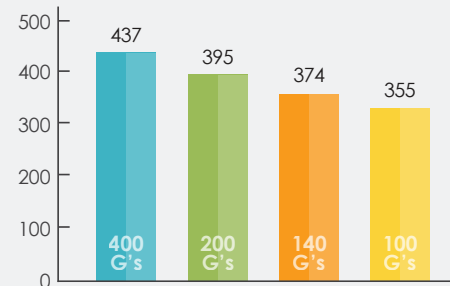
The two most important factors that impact the day-to-day laundry operation are equipment and labor. On average, labor accounts for 60 percent of the laundry room budget. By installing high-extract washers one full time employee can process more pounds of soiled laundry per hour—reducing your cost to process laundry per pound.

Assumptions: 1 FTE at \$10/hour operating 3 60lb washers and 3 75lb dryers 8 hours a day 365 days per year.



Increased Laundry Throughput 60lb Washer & 75lb Dryer

Pounds Processed / 8-hour Shift
Soiled Laundry → Wash → Dry → Ready to Fold!



KEY ● 400 Gs ● 200 Gs ● 140 Gs ● 100 Gs

Load Assumptions: 60lb 100% cotton soiled load (60lb washer & 75lb dryer; 35 minute wash cycle time. All calculations have been derived from engineering information available to Continental Girbau Inc. (CGI) at the time this brochure was produced. CGI makes no guarantee of actual results as conditions may vary.



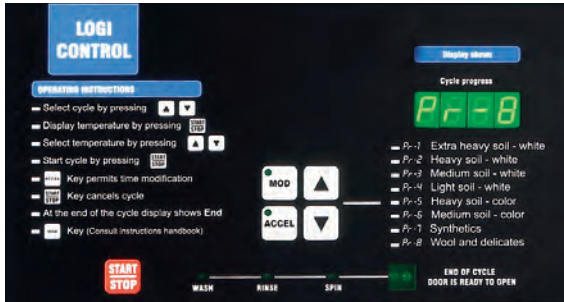
SAME DAY OPERATION WE'RE DONE ... THEY'RE STILL DIGGING.

The freestanding, soft-mount design of E-Series Washer-Extractors remove the variables associated with installation that can potentially cause problems in machine performance. Because there is no need to bolt the machines to the floor, concrete preparation, curing, grouting, hole drilling and foundation anchoring are eliminated. Continental's soft-mount design allows for fast installation and maintenance. One the machine is leveled and connected to utilities, it is ready for use! In addition, if your laundry has outgrown its space, or is in need of additional equipment, your soft-mount washer can be moved with zero impact on the existing space.

INNOVATIVE TECHNOLOGY

CONTROL FLEXIBILITY

E-Series offers two programmable controls—the Logic and Intelligent. Both offer unrivaled flexibility by allowing programmability of nearly every variable of the wash process. In doing so, E-Series Washers can be programmed to maximize productivity and water savings, while meeting the cleaning specifications of a wide variety of fabric types. Automatic chemical injection ensures items are properly cleaned every time, eliminating fabric damage due to chemical overuse. Despite their advanced technology, the controls couldn't be easier to use. Once the programs are set, operators simply select a program number and push start.



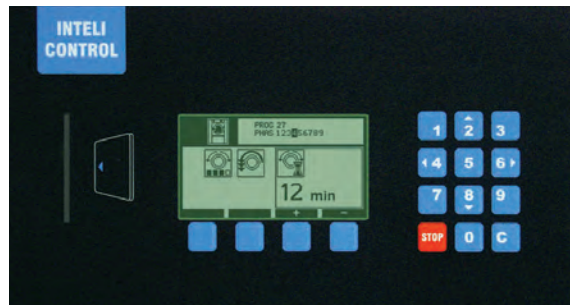
LOGIC (LOGI) CONTROL

The highly flexible Logi Control, available on EH030, EH040 and EH060 models, offers eight individually modifiable programs – each with up to nine baths including multiple pre-wash, wash and rinse cycles. Variables within each bath – wash temperature, water levels, cycle times, rotation and G-force extract speeds – can be individually programmed for maximum efficiency given the load type. E-Series Washers can also be programmed for automatic chemical injection, which ensures a consistent clean and eliminates chemical overuse and fabric damage.

- 8 modifiable programs
- Up to 9 phases per program
- 4 selectable water levels
- Connection to an external dosing system
- Failure check and alarm messages
- Test program
- Rinse Hold – soak option
- Crease-guard thermal cool down
- Programmable for delayed start
- Gradual cool down

INTELLIGENT (INTELI) CONTROL

Continental's most flexible and dynamic control ever, the Inteli allows complete control of every conditional aspect of the wash process! Featuring an LCD display with easy-to-understand icons that indicate cycle and programming status, the control can be programmed manually or by using a memory card. With 20 preprogrammed cycles and up to 79 individually modifiable cycles, users can control water temperature (by degree), wash rotation speed and duration, five on/off wash rotation combinations, multiple water levels, bath cool-down (by degree) and six programmable extract speeds. The Inteli is so flexible, it can be programmed for a wash cycle of as little as three minutes up to an extended program lasting hours or days. An auxiliary heat option allows bath water temperatures to be increased by degree.



E-Series 30- and 40-pound capacity models feature four standard (12 optional) chemical injection signals with programmable time dosing and flush. The 60-pound capacity E-Series Washers feature 12 standard chemical injection signals. The Inteli also supports independent flush control of its four compartment chemical hopper. Optional overnight soak and delayed start are also standard features.

- 99 programs (20 preprogrammed & 79 modifiable)
- Unlimited number of phases per program
- 6 selectable water levels
- Connection to an external dosing system
- Adjustable dosing signal length
- Simultaneous dosing of two products
- Failure check and alarm messages
- Test program
- Can manually adjust parameters during wash cycle
- Load Sensing – adjusts water and detergent according to load
- Rinse Hold – soak option
- Crease-guard thermal cool down
- Programmable for delayed start
- Individual cycle and program counter
- Gradual cool down

DUAL SAFETY FEATURES

E-Series washers have dual safety features. The washer is only active if a closed door and locked door signal have been validated. In each washing cycle, the system checks the status (open/closed) of the safety controls.



GDRIVE

An exclusive management and communication system – between the inverter, motor and microprocessor – ensures that the whole assembly is properly balanced for a longer life. GDrive works to save energy while reducing noise, vibration and component fatigue.



	EH030	EH040	EH060		
DIMENSIONS & WEIGHTS	Capacity lbs (kg)	30 (14)	40 (19)	60 (27.2)	
	Cylinder Diameter inch (mm)	24.4 (620)	27.6 (700)	30.1 (765)	
	Cylinder Depth inch (mm)	16.4 (416)	17.7 (450)	20.5 (520)	
	Cylinder Volume cu ft (dm ³)	4.4 (126)	6.1 (173)	8.4 (239)	
	Net Weight lbs (kg)	758 (344)	1049 (476)	1289 (584)	
	Crated Weight lbs (kg)	820 (372)	1102 (500)	1338 (607)	
	Machine Width inch (mm)	31.3 (796)	34.2 (868)	38.4 (975)	
	Machine Depth inch (mm)	34.9 (887)	37.9 (962)	48.2 (1225)	
	Machine Height inch (mm)	52.2 (1325)	55.3 (1404)	58.1 (1477)	
	Door Opening inch (mm)	12.9 (327)	16.8 (426)	15.7 (400)	
	Floor to Door inch (mm)	20 (509)	20.3 (515)	22.9 (581)	
	Shipping Dimensions inch (mm) (WxDxH)	32.4 x 37.2 x 58.8 (823 x 945 x 1494)	35.3 x 40 x 61.6 (897 x 1017 x 1565)	39.4 X 49.6 X 64.2 (1002 X 1260 X 1630)	
GENERAL	Control Options	Logic or Intelligent	Logic or Intelligent	Logic or Intelligent	
	Washing Speeds rpm	Logic Control Intelligent Control	48 13/27/36/43/48	45 13/25/34/40/45	— 22/27/36/42
	Spin Speeds rpm	99/400/600/800/1005	99/350/550/750/950	86/350/550/725/966	
	G-force	0.75/3/56/125/222/351	0.75/4/48/119/221/354	3.15/52/130/225/400	
	CONNECTIONS	Drain Diameter inch (mm)	3 (76)	3 (76)	3 (76)
Water Inlets inch (mm)		3/4 (19)	3/4 (19)	2 @ 3/4 (19)	
Recommended Water Pressure PSI (bar)		30-60 (2-4)	30-60 (2-4)	30-60 (2-4)	
Water Flow gal/min (l/min)		16 (60)	16 (60)	16 (60)	
Total Power kW		0.87	1.6	1.88	



* Product specifications and details are subject to change without notice. For the most current and complete technical specifications, architectural line drawings and warranty information, please visit www.continentalgirbau.com. E-Series Washer-Extractors are available in 20- to 255-pound capacities.

CONTINENTAL GIRBAU INC. & GIRBAU GROUP

Continental Girbau Inc. (Continental) was established in 1995 as the North American subsidiary of the commercial laundry equipment manufacturer, Girbau Group, headquartered in Vic, Spain. Family owned, Girbau employs more than 600 people throughout its corporate headquarters in Vic and 15 subsidiaries throughout the world. It markets its industrial and commercial laundry products to more than 90 countries worldwide.

THE TOTAL LAUNDRY SOLUTION

Continental delivers the total laundry solution to vended, on-premise and industrial laundries throughout North America. As the provider of highly efficient batch tunnel washers, washer-extractors, drying tumblers, feeders, ironers, folders and related machinery, Continental serves the complete laundry production and efficiency needs of virtually any application. Proven durable and reliable, Continental laundry systems are engineered for unrivaled productivity, efficiency and ease of use.

OUR MISSION: YOUR SUCCESS

Continental's mantra – "Our Mission: Your Success" – reflects the company's commitment to its distributors and customers. We offer robust laundry systems backed by unrivaled customer care.

WARRANTY

E-Series Washer-Extractors are backed by an industry-leading 5/3-year ContinentalCare warranty.

SIZING & CONFIGURATION

Every laundry operation is unique, with a distinctive set of production and efficiency goals. Uniquely, E-Series Washer-Extractors offer the flexibility and programmability to meet any need—boosting production and lowering labor, water and energy usage. Continental's team of experts work closely with facilities to properly size equipment for improved laundry room efficiency and productivity.

FINANCING

Financing allows you to retain full ownership of your business and its assets while helping to preserve your cash, liquidity and revolving lines of credit for emergency use, working capital and other investments. Through CustomSelect™ Financing, Continental Girbau offers flexible financing and competitive fixed rates to all qualifying applicants.

ENVIRONMENTALLY FRIENDLY

Continental laundry products meet rigorous environmental and safety standards established by the International Organization for Standardization (ISO) ISO), including ISO9001 and ISO14001. Ever focused on laundry efficiency, Continental Girbau is a member of the U.S. Green Building Council (USGBC), a 501(c)(3) nonprofit that developed the Leadership in Energy and Environmental Design (LEED) Green Building Rating System.



CONTINENTALCARE
BUY WITH COMPLETE CONFIDENCE

3-YR LIMITED PARTS WARRANTY
5-YR KEY COMPONENT WARRANTY

DISTRIBUTED BY:



www.continentalgirbau.com • 800-256-1073
2500 State Road 44 • Oshkosh, WI 54904 • 920-231-8222 • Fax 920-231-4666